



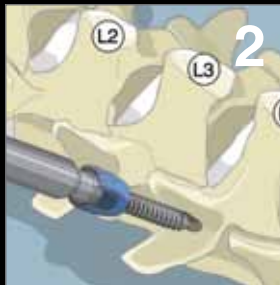
SPINEFRONTIER™
WHERE SURGEONS INNOVATE

Crux

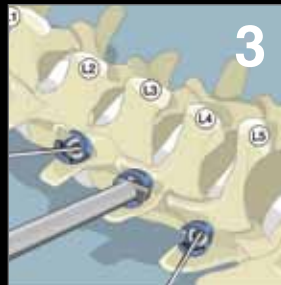
Cross Connector



Assemble Inserter



Pedicle Screw Insertion



Tulip Alignment



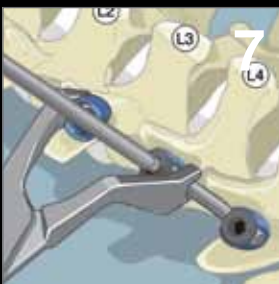
Rod Placement



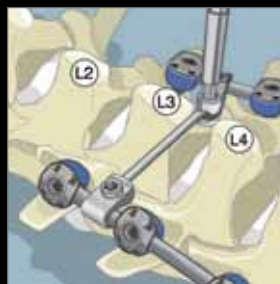
Rod Rocker



Set Screw Placement



Distraction or Compression



Crux



Final Position

Features and Benefits

- Toploading transverse connector
- Designed to pivot about the midpoint
- Designed to translate longitudinally for optimal fit
- Provided in multiple configurations
- A part of the PedFuse Pedicle Screw System
- Can be used to connect the rods for all PedFuse Pedicle Screw Systems

Learn more at www.spinefrontier.com or www.les-society.org



Less exposure
surgery technology

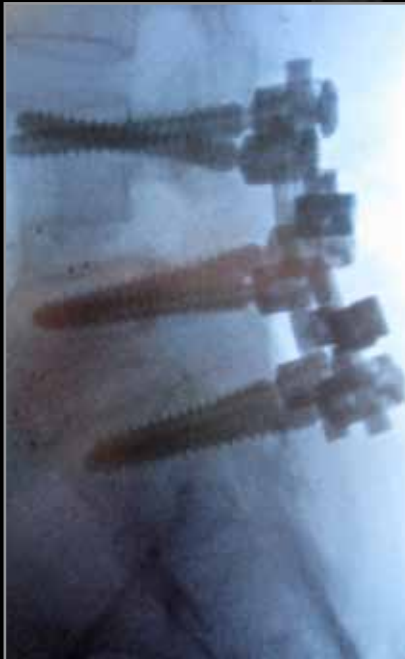
Les is enough.



SPINEFRONTIER™
WHERE SURGEONS INNOVATE

CruX

Cross Connector



INDICATIONS:

The PedFuse Pedicle Screw System is intended to provide immobilization and stabilization of spinal segments in skeletally mature patients as an adjunct to fusion in the treatment of the following acute instabilities or deformities of the thoracic, lumbar, and sacral spine: degenerative spondylolisthesis with objective evidence of neurological impairment, fracture, dislocation, scoliosis, kyphosis, spinal tumor, and failed previous fusion (Pseudoarthrosis). In addition, the PedFuse Pedicle Screw System is indicated for the treatment of severe spondylolisthesis (Grade 3 and 4) of the L5-S1 vertebrae in skeletally mature patients receiving fusion by autogenous bone graft.



We are surgeons who stand for the Less Exposure Surgery philosophy.



SPINEFRONTIER™
WHERE SURGEONS INNOVATE

500 Cummings Center
Suite 3500
Beverly, MA 01915 U.S.A.

P: + 1 978 232 3990
F: + 1 978 232 3991
innovation@spinefrontier.com

www.spinefrontier.com
DOC80020 rev.01



Learn more at www.les-society.org

Les is enough.