

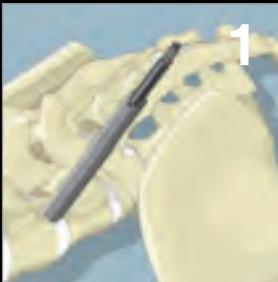


**SPINEFRONTIER™**  
WHERE SURGEONS INNOVATE

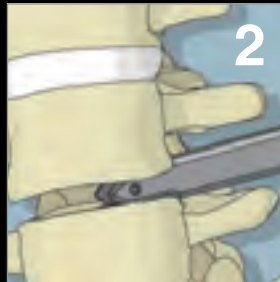
# E-LIFT™

Extraforaminal Lumbar Interbody Fusion Technology

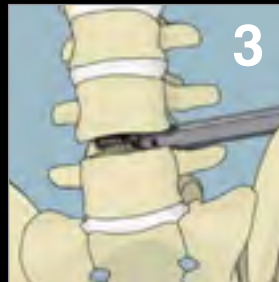
## Lumbar IBF System



Dilation



Insert Cannula



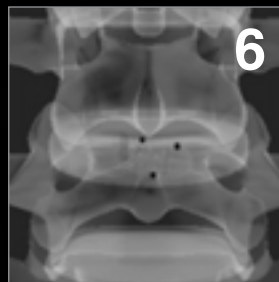
Discectomy



Graft Placement



Insert Implant



Final Position

### Features and Benefits

- Safe extraforaminal anatomy sparing approach
- Cannula footprint optimized for minimal anatomy impact
- Cannulas hold distraction during access
- Working cannulas allow for a comprehensive discectomy
- Percutaneous access results in minimal incision size
- The implant's bulleting allows for easy insertion



Learn more at [www.spinefrontier.com](http://www.spinefrontier.com) or [www.les-society.org](http://www.les-society.org)



Less exposure  
surgery technology

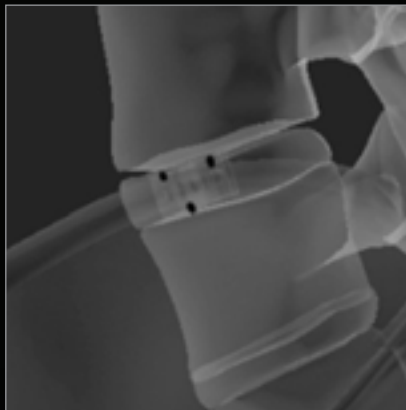
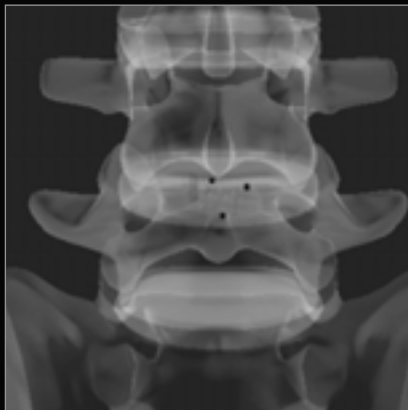
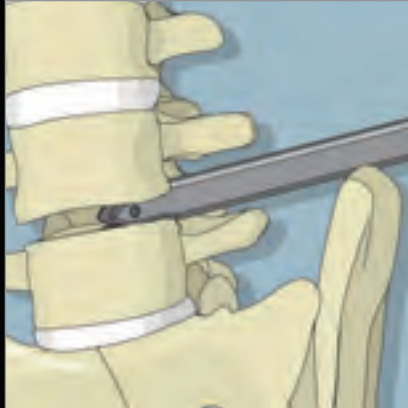
Les is enough.



**SPINEFRONTIER™**  
WHERE SURGEONS INNOVATE

# E-LIFT™

Extraforaminal Lumbar Interbody Fusion Technology



## INDICATIONS

The E-LIFT Intervertebral Body Fusion Device is a spinal intervertebral body fusion device intended for intervertebral body fusion of the spine of skeletally mature patients, using autogenous bone graft to facilitate fusion. The device is indicated for use in patients with degenerative disc disease (DDD) at one or two contiguous spinal levels from L2-S1. These DDD patients may also have up to Grade I spondylolisthesis or retrolisthesis at the involved level(s). The SpineFrontier E-LIFT Intervertebral Body Fusion Device is intended to be used with supplemental spinal fixation system(s) cleared for use in the lumbar spine (example: Facet Screw Fixation).

Degenerative disc disease is defined as discogenic back pain with degeneration of the disc confirmed by history or radiographic studies. These patients should be skeletally mature and have had six months of non-operative treatment.



We are surgeons who stand for the **Less Exposure Surgery** philosophy.



**SPINEFRONTIER™**  
WHERE SURGEONS INNOVATE

500 Cummings Center  
Suite 3500  
Beverly, MA 01915 U.S.A.

P: + 1 978 232 3990  
F: + 1 978 232 3991  
innovation@spinefrontier.com

www.spinefrontier.com  
DOC00406 rev.01



Learn more at [www.les-society.org](http://www.les-society.org)

**Les is enough.**