



SPINEFRONTIER™
WHERE SURGEONS INNOVATE

FacetFuse

MIS Screw System

Transfacet Pedicle Screw System



AP Trajectory



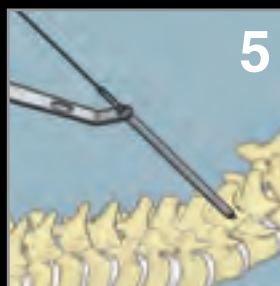
Lateral Trajectory



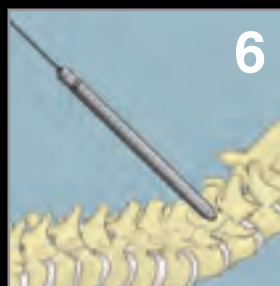
Jamshidi



Guidewire



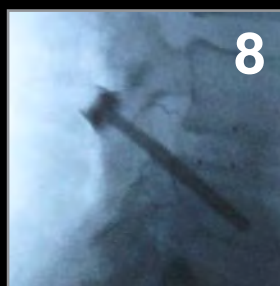
Drill



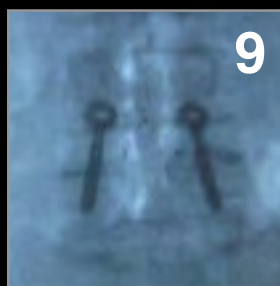
Dilate



Drive Screw



Lateral Fluoro



AP Fluoro

Features and Benefits

- Two screws (per level) replaces four pedicle screws, rods, and locking caps, resulting in less hardware and less OR time
- Single small midline incision preserves tissues and leaves stabilizing muscles intact
- Accommodates open, percutaneous MIS and LES techniques
- Low-profile head virtually eliminates soft tissue disruption and discomfort
- Provides direct compression across the facet joint and disc space when lag screw is inserted (no secondary mechanisms)
- Biomechanical studies show comparable strength and stability to traditional pedicle screws
- Preserves adjacent level anatomy (compared to pedicle screws)
- Adds stability to interspinous fixation constructs with no additional tissue disruption

Learn more at www.spinefrontier.com or www.les-society.org



Less exposure
surgery technology

Les is enough.



SPINEFRONTIER™
WHERE SURGEONS INNOVATE

FacetFuse

MIS Screw System

Transfacet Pedicle Screw System



Surgical Applications: FacetFuse can be used stand alone or with unilateral pedicle screws to support an intervertebral device such as:

- 1. ALIF
- 2. TLIF
- 3. PLIF
- 4. SLIF (lateral trans-psoas)
- 5. Paracoccygeal approaches

Indications:

CAUTION: USA Law restricts this device to sale by or on the order of a physician. The FacetFuse MIS Screw System is indicated for the posterior surgical treatment of any or all of the following at the L1 to S1 (inclusive) spinal levels: 1) Trauma, including spinal fractures and/or dislocations; 2) Spondylolisthesis; 3) Pseudoarthrosis or failed previous fusions which are symptomatic or which may cause secondary instability or deformity; 4) Degenerative diseases which include: (a) degenerative disc disease (DDD) as defined by neck and/or back pain of discogenic origin as confirmed by patient history with degeneration of the disc as confirmed by radiographic studies and/or (b) degenerative disease of the facets with pain and/or instability on plain flexion and extension lateral radiographs where there is movement of the vertebral bodies relative to each other of more than 4mm.

U.S. Patent # 8,007,299



We are surgeons who stand for the Less Exposure Surgery philosophy.



SPINEFRONTIER™
WHERE SURGEONS INNOVATE



500 Cummings Center
Suite 3500
Beverly, MA 01915 U.S.A.

P: + 1 978 232 3990
F: + 1 978 232 3991
innovation@spinefrontier.com

www.spinefrontier.com
DOC10034 rev.E

Learn more at www.les-society.org

Les is enough.