



SPINEFRONTIER™
WHERE SURGEONS INNOVATE

Inspan™

Spinous Process Plate System

Interspinous Fixation System



Dilation



Distraction



Insertion



Compression



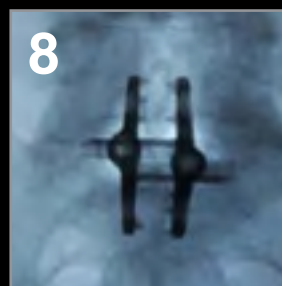
Locking



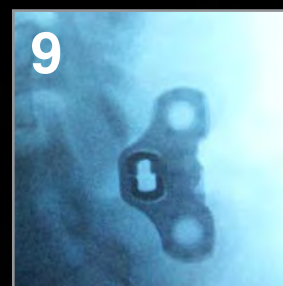
Graft Placement



Final Position



AP Fluoro



Lateral Fluoro

Features and Benefits

- Titanium implants provide superior strength and fixation
- Low profile design minimizes implant footprint within the patient
- Cylindrical hub provide spinous process distraction
- Dual interlocking hub with dual set screws provides an exceptionally rigid design
- Spikes are staggered to prevent fracture and provide optimal fixation
- Adapts to the anatomy of T1-S1
- Easy to insert dual locking hub design

Learn more at www.spinefrontier.com or www.les-society.org



Less exposure
surgery technology

Les is enough.



SPINEFRONTIER™
WHERE SURGEONS INNOVATE

Inspan™

Spinous Process Plate System

Interspinous Fixation System



INDICATIONS:

The InSpan Spinous Process Plate System is a posterior non-pedicle supplemental fixation system intended for use in the non-cervical spine (T1-S1). It is intended for plate fixation/attachment to the spinous process for the purpose of achieving supplemental fusion for the following indications: spondylolisthesis, trauma (fracture or dislocation), tumor, or degenerative disc disease (defined as discogenic pain with degeneration of the disc confirmed by history and radiographic studies). The device is intended for use with bone graft material and is not intended for stand-alone use.

U.S. Patent # 7,871,426

U.S. Patent # 6,626,909



We are surgeons who stand for the **Less Exposure Surgery** philosophy.



SPINEFRONTIER™
WHERE SURGEONS INNOVATE

500 Cummings Center
Suite 3500
Beverly, MA 01915 U.S.A.

P: + 1 978 232 3990
F: + 1 978 232 3991
innovation@spinefrontier.com

www.spinefrontier.com
DOC60003 rev.06



Learn more at www.les-society.org

Les is enough.