



SPINEFRONTIER™
WHERE SURGEONS INNOVATE

PedFuse™ Respond

KRD-1 Pedicle Screw System



Cortical Perforation



The Screw Caddy



Pedicle Screw Insertion



Screw Position



Set Screw



Break Tabs



Final Position



Lateral Fluoro

Features and Benefits

- Cannulated system for MIS, LES and Percutaneous procedures
- 60° of polyaxial rotation can be achieved between tulip and screw
- Color coded implants for ease of identification
- Re-animation of tulip after final locking and unlocking of system
- Friction fit washer maintains tulip position
- Tulip lead-in for set screw to minimize cross-threading
- Reverse thread resists cross-threading and creates a lock between tulip and set screw, virtually eliminating splay

Learn more at www.spinefrontier.com or www.les-society.org



Less exposure
surgery technology

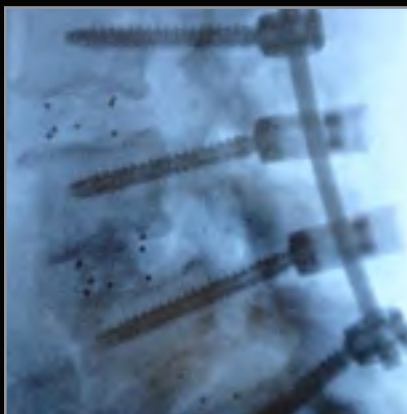
Les is enough.



SPINEFRONTIER™
WHERE SURGEONS INNOVATE

PedFuse™ RESPOND

KRD-1 Pedicle Screw System



INDICATIONS:

The KRD-1 Pedicle Screw System is intended to provide immobilization and stabilization of spinal segments in skeletally mature patients as an adjunct to fusion in the treatment of the following acute instabilities or deformities of the thoracic, lumbar, and sacral spine: degenerative spondylolisthesis with objective evidence of neurological impairment, fracture, dislocation, scoliosis, kyphosis, spinal tumor, and failed previous fusion (Pseudoarthrosis). In addition, the KRD-1 Pedicle Screw System is indicated for the treatment of severe spondylolisthesis (Grade 3 and 4) of the L5-S1 vertebra in skeletally mature patients receiving fusion by autogenous bone.



We are surgeons who stand for the Less Exposure Surgery philosophy.



SPINEFRONTIER™
WHERE SURGEONS INNOVATE

500 Cummings Center
Suite 3500
Beverly, MA 01915 U.S.A.

P: + 1 978 232 3990
F: + 1 978 232 3991
innovation@spinefrontier.com

www.spinefrontier.com
DOC80016 rev.04



Learn more at www.les-society.org

Les is enough.