



SPINEFRONTIER™
WHERE SURGEONS INNOVATE

PedFuse™ RETURN

KRD-1 Pedicle Screw System



Cortical Perforation



Pedicle Screw Insertion



Tulip Alignment



Rod Template & Bending



Rod Pushing



Rod Rocker



Locking Cap Seating



Final Step



Final AP Position

Features and Benefits

- Cannulated system for MIS, LES and Percutaneous procedures
- 60° of polyaxial rotation can be achieved between tulip and screw
- Color coded implants for ease of identification
- Re-animation of tulip after final locking and unlocking of system
- Friction fit washer maintains tulip position
- Patented locking cap and tulip
- Lower profile and narrow tulip allows for easy maneuverability around the anatomy
- The low profile system allows for less soft tissue disruption

Learn more at www.spinefrontier.com or www.les-society.org



Less exposure
surgery technology

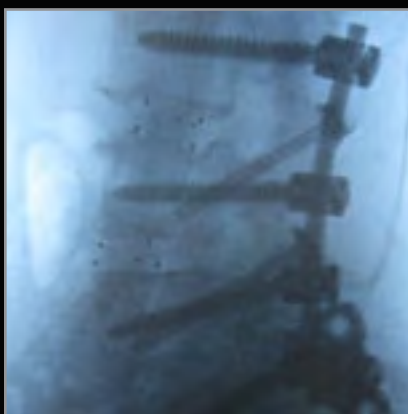
Les is enough.



SPINEFRONTIER™
WHERE SURGEONS INNOVATE

PedFuse™ RETURN

KRD-1 Pedicle Screw System



INDICATIONS:

The KRD-1 Pedicle Screw System is intended to provide immobilization and stabilization of spinal segments in skeletally mature patients as an adjunct to fusion in the treatment of the following acute instabilities or deformities of the thoracic, lumbar, and sacral spine: degenerative spondylolisthesis with objective evidence of neurological impairment, fracture, dislocation, scoliosis, kyphosis, spinal tumor, and failed previous fusion (Pseudoarthrosis). In addition, the KRD-1 Pedicle Screw System is indicated for the treatment of severe spondylolisthesis (Grade 3 and 4) of the L5-S1 vertebra in skeletally mature patients receiving fusion by autogenous bone.

Patent # 7,811,310



We are surgeons who stand for the Less Exposure Surgery philosophy.



SPINEFRONTIER™
WHERE SURGEONS INNOVATE

500 Cummings Center
Suite 3500
Beverly, MA 01915 U.S.A.

P: + 1 978 232 3990
F: + 1 978 232 3991
innovation@spinefrontier.com

www.spinefrontier.com
DOC80005 rev.08



Learn more at www.les-society.org

Les is enough.